

# Product Information

## Dispense valve, DN 14



## A.u.K. Müller

Solenoid valves  
Control valves  
Special valves and systems

A. u. K. Müller GmbH & Co. KG  
Dresdener Str. 162  
D-40595 Düsseldorf/Germany

Tel.: +49(0)211-7391-0  
Fax: +49(0)211-7391-281

e-mail: [info@akmueller.de](mailto:info@akmueller.de)  
Internet: [www.akmueller.de](http://www.akmueller.de)

### Series 40.014.III



### Characteristics

- direct controlled
- plunger separated by diaphragm from medium
- PTFE valve seat to inhibit scale build up
- long term performance capability
- suitable for food and hot water appliances
- works from zero pressure
- similar hydraulic performance for AC or DC types
- other hydraulic connections on request
- complete drainage of valve outlet after shut off
- easy to assemble and service
- coil change without opening of medium circuit, coil can be mounted 4 x 90°
- high operating safety through the use of high quality and 100% final testing of the products

### Applications

- hot / cold drink dispensers
- tank or boiler draining
- automatic animal feeding equipment

### Description

2/2-way solenoid valve of nominal diameter DN 12 for liquid dispense. This valve is direct controlled and normally closed (NC).

Valves of this design are medium separated seat valves, where the plunger is separated by a diaphragm from the medium. The valve seat is made of scale build up inhibiting PTFE.

This valve can be manufactured with a variety of customised connections in DC or AC voltage. Low power or PPM triggering can be used.

The electrical operational safety is guaranteed by the electrical insulation coordination, which corresponds to the VDE 110 regulations. The manufacturing process includes a 100% electrical safety test in accordance with the VDE 0631 Part 1000 regulations.

The valve is available in different PSU valve body types and is distinguished primarily by its food grade and hot water capability.

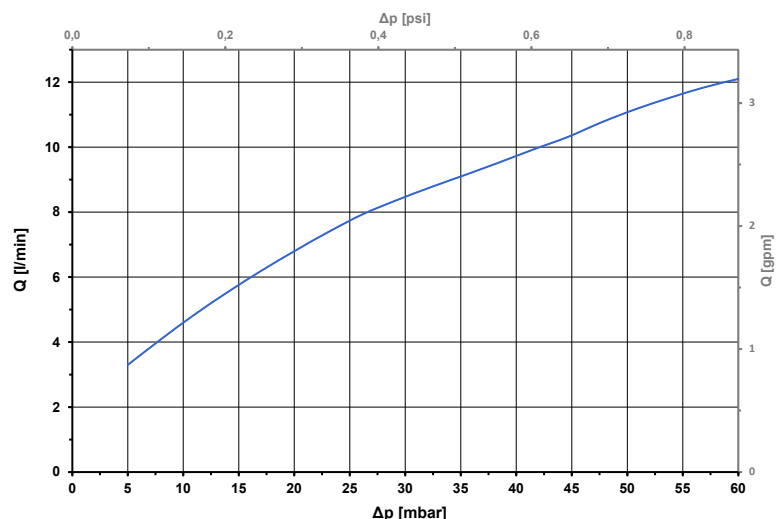
### Possible Approvals

Approved versions available on request:



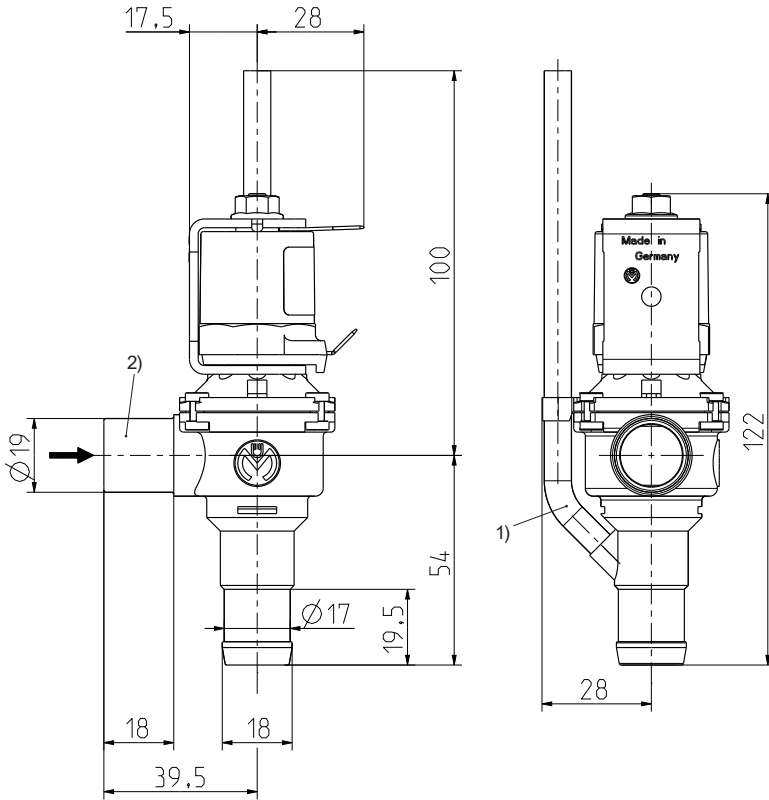
- NSF 169
- WRAS
- KTW/W270
- UL
- Others on request

Typical Performance Curve





**Series 40.014.III**



**Valve body version**

**Technical Data**

<b>Type</b>	dispense valve		
<b>Construction</b>	2/2-way single chamber valve inlet ninety degree to the outlet, direct acting		
<b>Function</b>	NC (normally closed)		
<b>Fitting position</b>	coil pointing upwards		
<b>Media</b>	cold and heated potable water and physically and chemically similar media		
<b>T-Medium</b>	5 - 98	°C	
<b>T-Ambient</b>	5 - 70	°C	
<b>DN</b>	14	mm	
<b>p-Operating</b>	0 - 60	mbar	
<b>Coil type</b>	MS 06, MS 24, MS 25		
<b>Nominal voltages</b>	230	V AC	50/60 Hz
	110	V AC	50/60 Hz
	24	V AC	50/60 Hz
	24	V DC	
	other voltages on request		
<b>Voltage tolerance</b>	+10% -15%		
<b>Duty cycle</b>	50% (30 s on/30 s off)		
<b>Nominal power</b>	9,5 W	16,4 VA (AC only)	
<b>Protection type</b>	see coils		
<b>Coil connection</b>	flat tabs 6,3 x 0,8 mm (others on request)		
<b>Insulation class</b>	F	according to EN 60730	
<b>Protection class</b>	see coils	according to EN 60730	

**Options**

- 1) Ventilation of outlet nozzle to drain downstream tubing completely. Different lengths of breather tube on request.
- 2) Boiler sealings on request

**Materials**

<b>Valve body</b>	PSU
<b>Valve seat</b>	PTFE
<b>Plunger guide</b>	stainless steel
<b>Plunger</b>	stainless steel
<b>Membrane and sealings</b>	VMQ
<b>Coil coating</b>	PBT, PET or epoxy resin

**Coils**

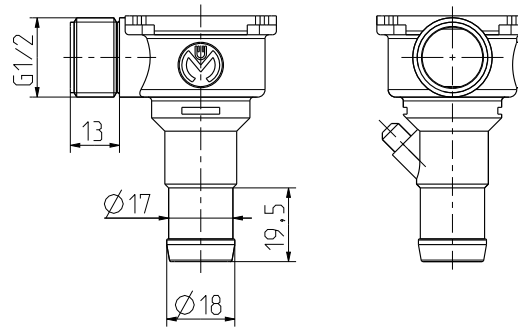
		MS 06	MS 24	MS 25
<b>Protection Type according to ISO 206653 / DIN EN 60529</b>		IP 00	IP 65	IP 65 / 68
<b>Protection class DIN EN 61140 / DIN EN 60730</b>	I with protective conductor system		-	-
	II with reinforced insulation			
	III for SELV or PELV			



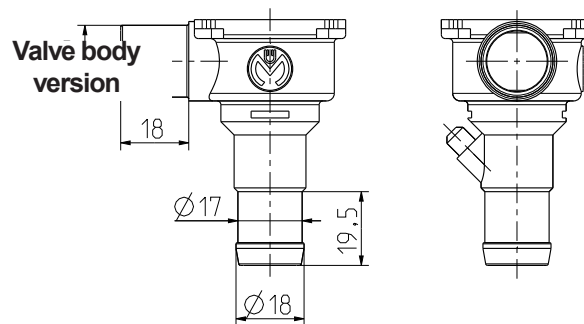
### Series 40.014.III

Alternative valve body with G 1/2 inlet thread

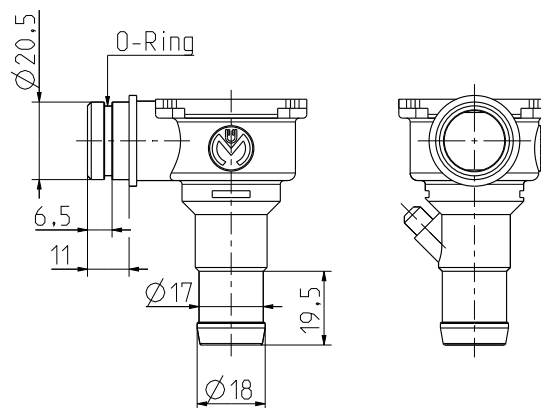
~001



~002



~003

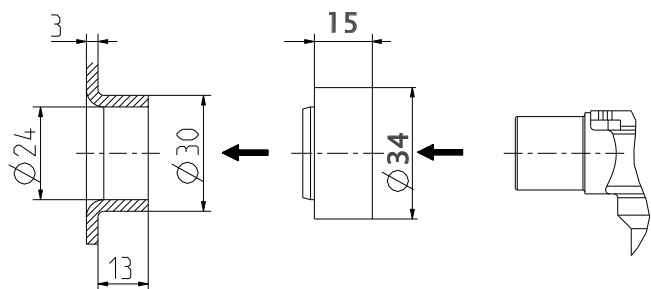




Series 40.014.111

Tank sealings material: VMQ

For valve body version



~002

005000



Seal for tank inlet nipples

